
Teeth Whitening Machine

MD885L
User Manual



To reach better result, please read this instruction before use.

Sound Warning

- a) . After starting, the machine will beep each minute.
- b) .You will hear three beeps after finished.

Cooling Setting

- a) . To guarantee all LEDs could work at normal temperature when whitening process, we fix a high efficiency and quite fan to expel heat .
- b) . Built-in smart temperature protection, when it meets high temperature will shut down power automatically, after cooling, everything works properly.

Liability

Assembly, stretching, readjustment, modification and repair are performed by our company authorized person.

Please follow electrical products installation relevant requirements.

Please follow the instructions to use this equipment. .

8.Screen Brightness Setting Instruction



Catalogue

- 1.Safety 2
- 2.Application 2
- 3.Installation Sketch Maps 3
- 4.Product Structure 7
- 5.Product Feature 9
- 6.Product Specification 9
- 7.Operation Instruction..... 10
- 8.Liability 17

Safety

Note:

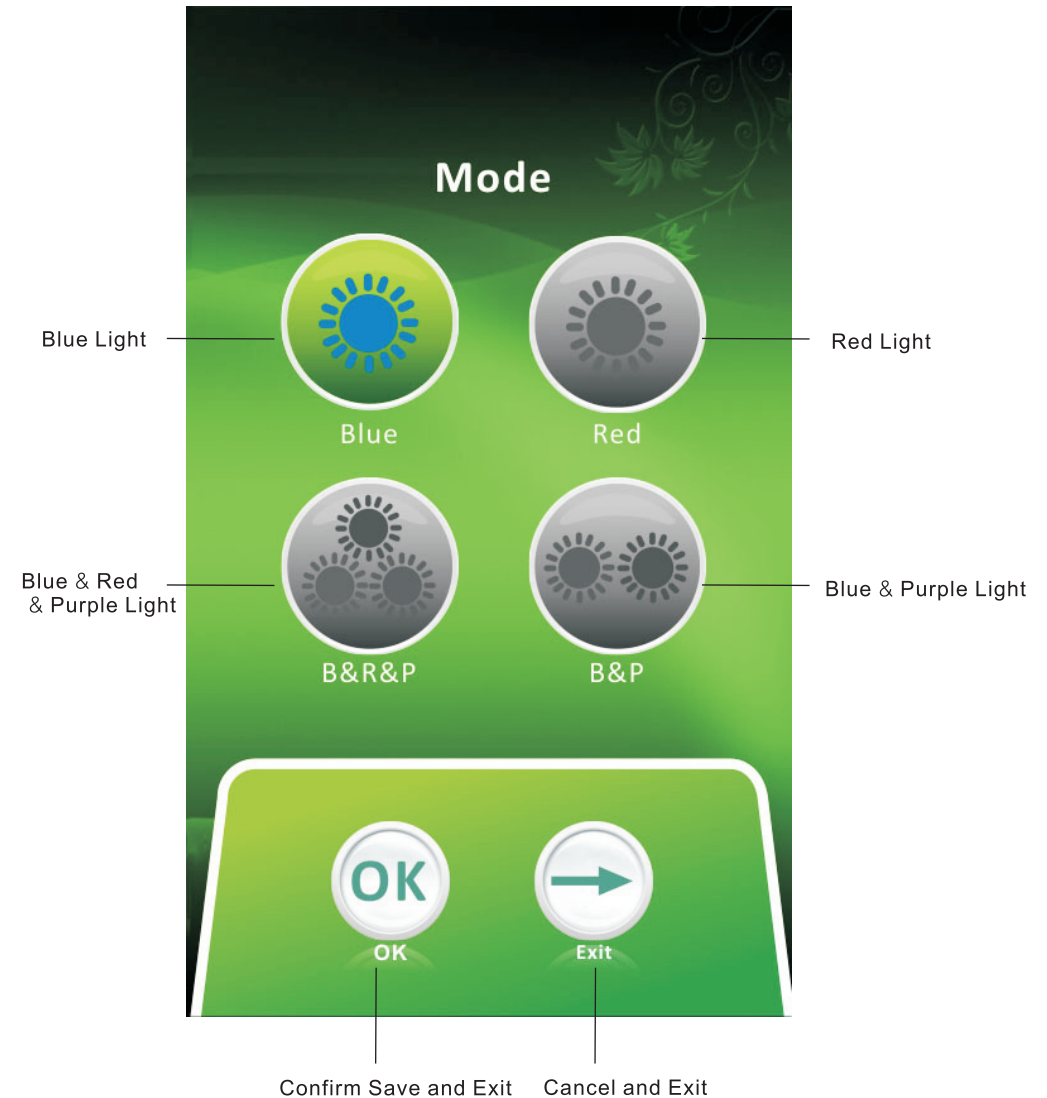
Prior to installation and start the unit, please read the instruction carefully.
Please note the following safety use recommended in the instructions.

- ⚠ Caution: It is important to observe the following precautions and procedures.
- ⚠ Caution: Please do not use this device expose to the persons which have history of Photosensitivity or photosensitizing drugs.
- ⚠ Caution: This equipment is not suitable for use in the presence of flammable anesthetic Mixtures with air or nitrous oxide.
- ⚠ Caution: Please do not look at the light directly, remember to wear goggle when it is in use, or it will hurt your eyes.
- ⚠ Caution: Please release the locking nut and handwheel when you adjust the position of the machine, and then readjust, or it will influence the life of the machine.

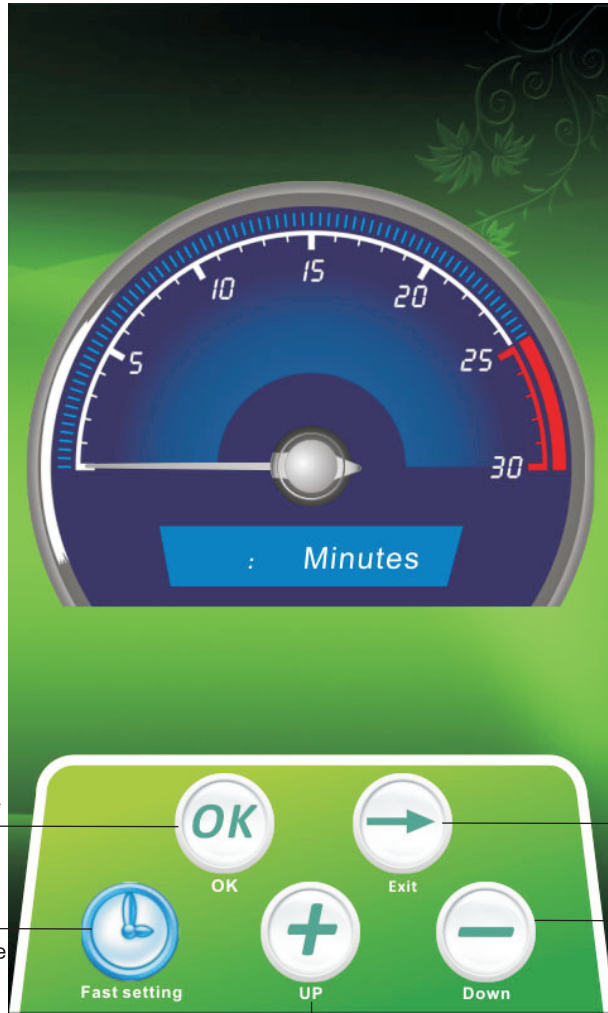
Application

MD885L is a cooling light device could emit specific wavelength , the light irradiate a special whitening agent which is applied on the surface of the teeth so that teeth become whitening.

7. Mode Setting Instruction



6. Time Setting Instruction



Confirm Save and Exit

Fast Setting (Press one time add 5mins)



Cancel and Exit

Press one time minus one min.

Press one time plus one min.

Installation Sketch Map



1. Twist the wheels to the feet, and twist tightly with a wrench

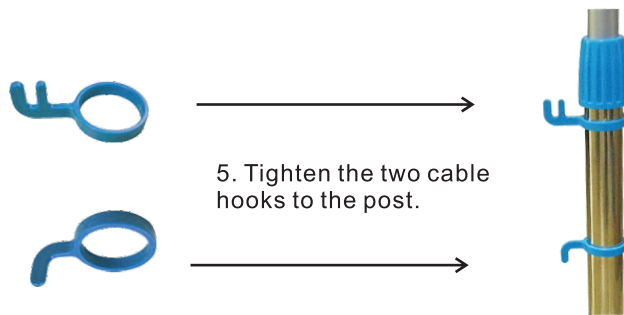
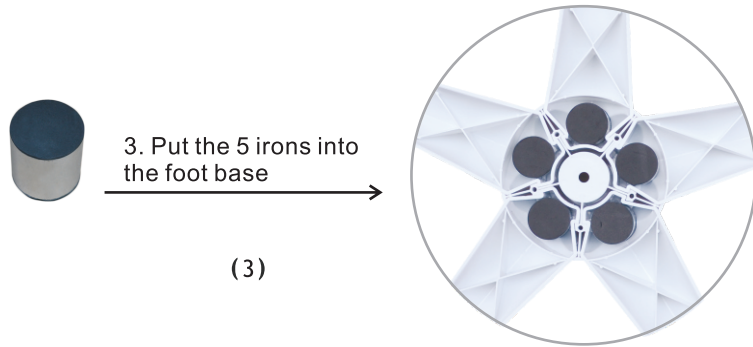
(1)



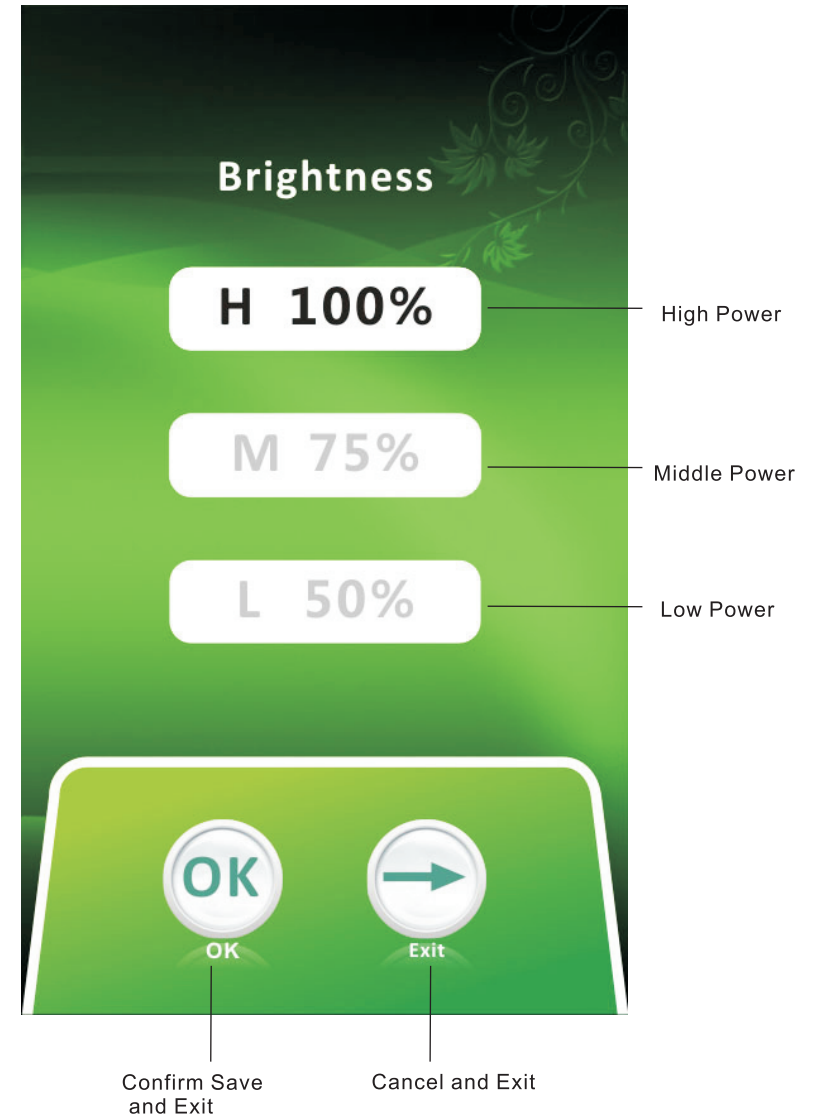
2 . Fix 5 feet onto the settled seat.

(2)

Installation Sketch Map



5.Power Setting Instruction(Set brightness for light output)



4. Main Screen Function Instruction



Installation Sketch Map



6. Put pole 1 with decorative set placed on the settled seat and support with hand.



7. Turn over the feet and fix settled seat and pole with long screw. (if the screw haven't twist tightly, the pole will shake)

Installation Sketch Map

⚠ 8. Please release nut firstly if you need adjust machine position or angle. Otherwise it will damage the machine or affect the machine use life.

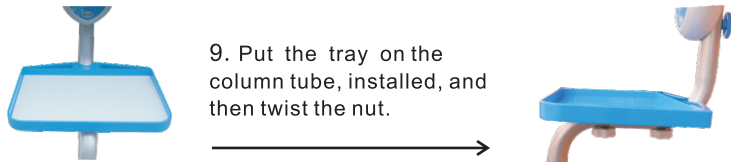


(8)

(Proper operation)



(Improper operation)



9. Put the tray on the column tube, installed, and then twist the nut.

(9)



(10)

10. Put pole 2 into pole 1 and twist fixed iron pipe.

3. Power On Screen instruction

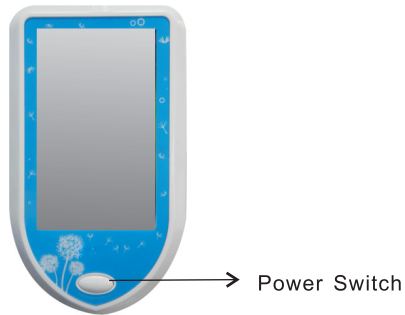


Power button
(press here enter into main screen)

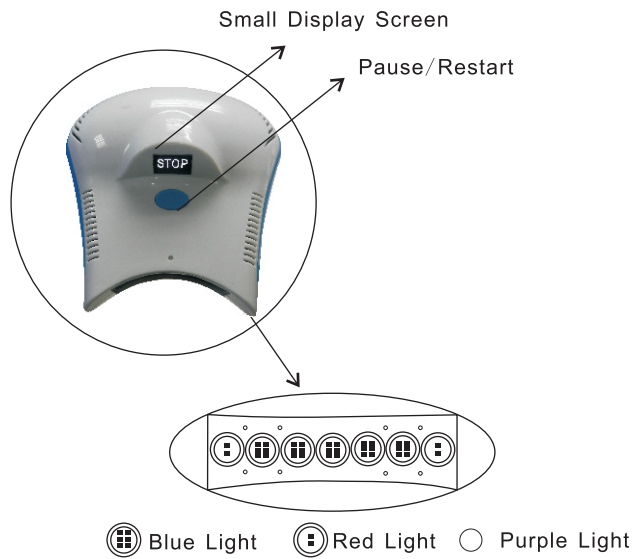
Operation Instruction

1. Turn on Teeth Whitening Machine power

- A. Plug into power cord.
- B. Turn On whitening machine power switch.



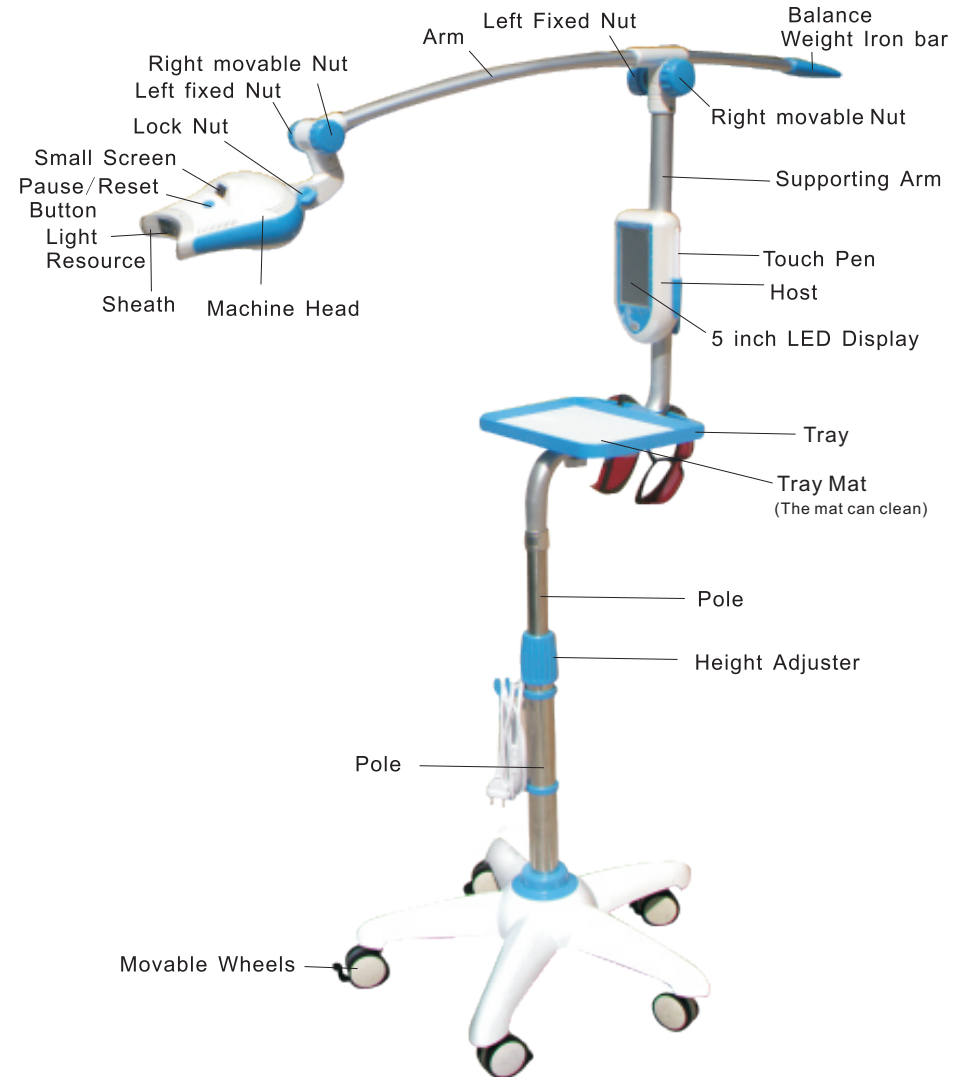
2. Head Introduction



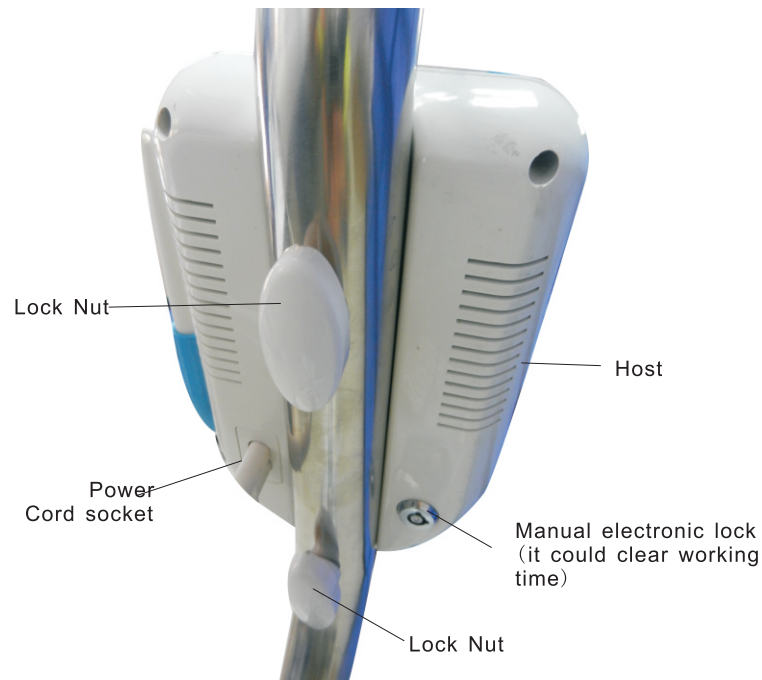
Contain five high-power Blue LEDs, two Red LEDs and 8 Purple LEDs

Product Structure

⚠ Please release nut firstly if you need adjust machine position or angle, or it will effect machine use life.



Host Back instruction



Accessories

| | |
|-----------------|---------|
| MD885L | 1pc |
| Power Cord | 1pc(2m) |
| Goggle | 2 pairs |
| Sheath | 20pcs |
| Mouth Retractor | 1pc |
| User Manual | 1pc |
| Tray | 1pc |
| Tray Mat | 1pc |

Product Feature

- * High efficiency wall conjoined sliding structural design, adjust angle freely and convenient to use.
- * A multi-functional high-sensitivity 5-inch touch electronic display, easy operation
- * Four light source output selection: blue, red, blue + red + purple, blue + purple
- * Three-stage power output selection, users can select a different power according to the patient's condition
- * The user can select needed time according to desired treatment, time adjustment range from 1 to 30 minutes
- * Work time counting function, comes with electronic lock, work time could clear by that lock for user.
- * In the case of not working, the machine will go to sleep automatically after 60 seconds
- * Enclosed disposable sheath, prevent cross-infection, clean and convenient, let patient feel relieved.

Product Specification

- * Broad Spectrum : 450nm~510nm (Blue Light) & 620nm~640nm (Red Light) 380nm~420nm (Purple Light)
- * Voltage : AC: 100V~240V
- * Light source : 4~5W/pc (Blue Light) ; 2~3W/pc (Red Light); 1W/pc (Purple Light).
- * Gross Weight : 5kgs.
- * Total Arm Length : 90cm.
- * Total Height : 120cm.

| Distance between Teeth and Illuminator (mm) | Uniformity |
|---|------------|
| 10mm | Over 95% |
| 20mm | Over 90% |
| 30mm | Over 85% |
| 40mm | Over 80% |
| 50mm | Over 75% |

